

User's Guide



TM

pcANYWHERE 

pcANYWHERE CE User's Guide

The software described in this book is furnished under a license agreement and may be used only in accordance with the terms of the agreement.

Copyright Notice

Copyright © 1997 Symantec Corporation.

All Rights Reserved.

Any technical documentation that is made available by Symantec Corporation is the copyrighted work of Symantec Corporation and is owned by Symantec Corporation.

NO WARRANTY. The technical documentation is being delivered to you AS-IS and Symantec Corporation makes no warranty as to its accuracy or use. Any use of the technical documentation or the information contained therein is at the risk of the user. Documentation may include technical or other inaccuracies or typographical errors. Symantec reserves the right to make change without prior notice.

No part of this publication may be copied without the express written permission of Symantec Corporation, Peter Norton Group, 10201 Torre Avenue, Cupertino, CA 95014.

Trademarks

Symantec, pcANYWHERE, pcANYWHERE32, ColorScale, SpeedSend, AutoXfer, ezSCROLL, and ezZOOM are trademarks of Symantec Corporation.

Windows is a registered trademark, Windows 95 and Windows NT are trademarks of Microsoft Corporation. Other product names mentioned in this manual may be trademarks or registered trademarks of their respective companies and are hereby acknowledged.

Printed in the United States of America.

10 9 8 7 6 5 4 3 2 1

SYMANTEC LICENSE AND WARRANTY

The software which accompanies this license (the "Software") is the property of Symantec or its licensors and is protected by copyright law. While Symantec continues to own the Software, you will have certain rights to use the Software after your acceptance of this license. Except as may be modified by a license addendum which accompanies this license, your rights and obligations with respect to the use of this Software are as follows:

- You may:

- (i) use one copy of the Software on a single computer;
- (ii) make one copy of the Software for archival purposes, or copy the software onto the hard disk of your computer and retain the original for archival purposes;
- (iii) use the Software on a network, provided that you have a licensed copy of the Software for each computer that can access the Software over that network;
- (iv) after written notice to Symantec, transfer the Software on a permanent basis to another person or entity, provided that you retain no copies of the Software and the transferee agrees to the terms of this agreement; and
- (v) if a single person uses the computer on which the Software is installed at least 80% of the time, then after returning the completed product registration card which accompanies the Software, that person may also use the Software on a single home computer.

- You may not:

- (i) copy the documentation which accompanies the Software;
- (ii) sublicense, rent or lease any portion of the Software;
- (iii) reverse engineer, decompile, disassemble, modify, translate, make any attempt to discover the source code of the Software, or create derivative works from the Software; or
- (iv) use a previous version or copy of the Software after you have received a disk replacement set or an upgraded version as a replacement of the prior version, unless you donate a previous version of an upgraded version to a charity of your choice, and such charity agrees in writing that it will be the sole end user of the product, and that it will abide by the terms of this agreement. Unless you so donate a previous version of an upgraded version, upon upgrading the Software, all copies of the prior version must be destroyed.

- Limited Warranty:

Symantec warrants that the media on which the Software is distributed will be free from defects for a period of sixty (60) days from the date of delivery of the Software to you. Your sole remedy in the event of a breach of this warranty will be that Symantec will, at its option, replace any defective media returned to Symantec within the warranty period or refund the money you paid for the Software. Symantec does not warrant that the Software will meet your requirements or that operation of the Software will be uninterrupted or that the Software will be error-free.

THE ABOVE WARRANTY IS EXCLUSIVE AND IN LIEU OF ALL OTHER WARRANTIES, WHETHER EXPRESS OR IMPLIED, INCLUDING THE IMPLIED WARRANTIES OF MERCHANTABILITY, FITNESS FOR A PARTICULAR PURPOSE AND NONINFRINGEMENT. THIS WARRANTY GIVES YOU SPECIFIC LEGAL RIGHTS. YOU MAY HAVE OTHER RIGHTS, WHICH VARY FROM STATE TO STATE.

- Disclaimer of Damages:

REGARDLESS OF WHETHER ANY REMEDY SET FORTH HEREIN FAILS OF ITS ESSENTIAL PURPOSE, IN NO EVENT WILL SYMANTEC BE LIABLE TO YOU FOR ANY SPECIAL, CONSEQUENTIAL, INDIRECT OR SIMILAR DAMAGES, INCLUDING ANY LOST PROFITS OR LOST DATA ARISING OUT OF THE USE OR INABILITY TO USE THE SOFTWARE EVEN IF SYMANTEC HAS BEEN ADVISED OF THE POSSIBILITY OF SUCH DAMAGES.

SOME STATES DO NOT ALLOW THE LIMITATION OR EXCLUSION OF LIABILITY FOR INCIDENTAL OR CONSEQUENTIAL DAMAGES SO THE ABOVE LIMITATION OR EXCLUSION MAY NOT APPLY TO YOU.

IN NO CASE SHALL SYMANTEC'S LIABILITY EXCEED THE PURCHASE PRICE FOR THE SOFTWARE. The disclaimers and limitations set forth above will apply regardless of whether you accept the Software.

- U.S. Government Restricted Rights:

RESTRICTED RIGHTS LEGEND. Use, duplication, or disclosure by the Government is subject to restrictions as set forth in subparagraph (c) (1) (ii) of the Rights in Technical Data and Computer Software clause at DFARS 252.227-7013 or subparagraphs (c) (1) and (2) of the Commercial Computer Software-Restricted Rights clause at 48 CFR 52.227-19, as applicable, Symantec Corporation, 10201 Torre Avenue, Cupertino, CA 95014.

- General:

This Agreement will be governed by the laws of the State of California. This Agreement may only be modified by a license addendum which accompanies this license or by a written document which has been signed by both you and Symantec. Should you have any questions concerning this Agreement, or if you desire to contact Symantec for any reason, please write:

Symantec Customer Service, 175 W. Broadway,
Eugene, OR 97401.

Contents

Chapter 1 Introducing pcANYWHERE CE

Installing pcANYWHERE CE	7
Licensing pcANYWHERE CE	8
Specifying the program folder	8
Registering your copy of pcANYWHERE CE	9
Copying pcANYWHERE to the handheld PC	9

Chapter 2 Connection devices

Connection Info property page	13
TAPI modem definition	14
COM1 through COM4 serial devices	15

Chapter 3 Remote control configuration

Creating connection items	17
Setting application options	20
Navigation Options	20
Viewing Options	21

Chapter 4 Remote control sessions

Managing the session	23
pcANYWHERE CE command bar	23
Transferring data	25

Appendix A pcANYWHERE CE Host

Installing the pcANYWHERE CE host	27
Configuring the desktop host	27

Index

Introducing pcANYWHERE CE



pcANYWHERE CE is a remote-only version of pcANYWHERE developed for the Microsoft Windows™ CE operating system. You can use pcANYWHERE CE to remotely control any host PC running pcANYWHERE32, version 7.5 or higher, or the pcANYWHERE CE desktop host. For example, you can use your Windows CE unit in Los Angeles to connect with and operate your desktop PC in New York.

If your copy of pcANYWHERE CE includes a desktop host, see Appendix A for information on configuring the host.

Installing pcANYWHERE CE

Installation of pcANYWHERE CE is a two-step process. The files are first installed on the desktop PC and then copied to the Windows CE handheld device.

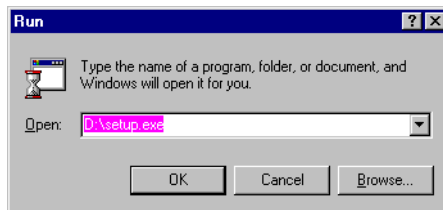
Note: If your copy of pcANYWHERE CE includes a desktop host, the host files are installed first. Please see Appendix A for important information on the installation of the desktop host.

To install pcANYWHERE CE:

- Insert the CD into the drive on the desktop PC.
Setup automatically runs if the Windows AutoPlay feature is enabled.

To manually install pcANYWHERE CE:

- 1 Choose RUN from the Windows 95 or Windows NT Start menu.
- 2 Type `D:\Setup.exe` in the Open text box (Figure 1-1) and click OK.

Figure 1-1

If your copy of pcANYWHERE CE includes a desktop host, Setup checks for an existing installed version of pcANYWHERE. If a previously installed version is detected, the desktop host is not installed. The desktop host is provided for those not currently using pcANYWHERE32. Installation would overwrite your existing files.

Follow the on-screen instructions to complete the installation.

Licensing pcANYWHERE CE

The pcANYWHERE CE program requires that you provide licensing information before continuing with the installation.

Specifying the program folder

After entering the license information for your copy of pcANYWHERE CE, the installation program asks for the name of the folder where the files will be copied.

- **Desktop Program Location:** Contains the files for the pcANYWHERE CE desktop host. If your copy of pcANYWHERE CE does not contain a desktop host this screen is not displayed.
- **Handheld PC Setup Location:** Contains the files that will be copied to the handheld device.

To accept the displayed program folder:

- Click Next to proceed with the installation.

To change the program location:

- 1 Click Custom.
- 2 Do one of the following procedures:

- Type a new location in the New Location text box.
 - Click Browse to select a new location.
- 3 Click Next to continue with the installation.

Registering your copy of pcANYWHERE CE

As a registered user you receive future product announcements and other important notices. You can click Skip to proceed with the installation without filling out the registration forms.

After completing the registration forms you can choose one of the following options:

- **Modem:** Registers your copy of pcANYWHERE CE directly from your computer and sends the registration information electronically to our toll-free number.
- **Fax Or Mail:** Sends the registration information to your printer. You can then either fax or mail it to the address provided on the printed registration form.

Copying pcANYWHERE to the handheld PC

After completing the desktop installation you can use Setup to copy the files to the handheld PC. You can also choose to skip this portion of the installation and run the remote setup at a later time.

- **Load pcANYWHERE To My Handheld PC Now:** If the handheld PC is connected to the desktop PC, you can continue with the installation and allow Setup to copy the necessary files to the handheld device.

Note: The HPC Explorer must be installed and properly configured before a connection can be made with the handheld PC. Refer to Microsoft's *Handheld PC User's Guide* for more information.

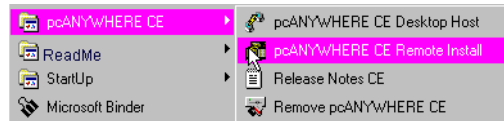
- **I Will Load pcANYWHERE To My Handheld PC At A Later Time:** If the handheld PC is not connected or immediately available, you can easily copy the files at a later time. See ["To copy pcANYWHERE CE files to the handheld PC;"](#) on page 9 for more information.

To copy pcANYWHERE CE files to the handheld PC:

- 1 Choose PROGRAMS from the Windows 95 or Windows NT Start menu.

- 2 Point to the pcANYWHERE CE folder.
- 3 Point to pcANYWHERE CE Remote Install.

Figure 1-2

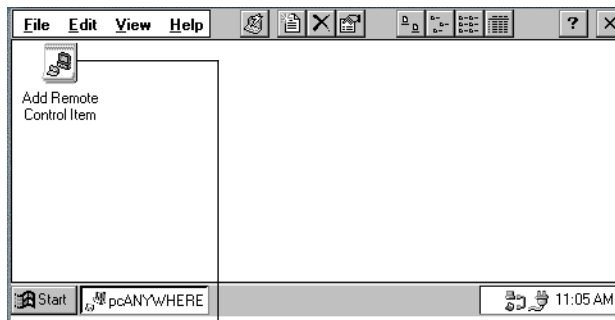


To run pcANYWHERE CE remote:

- Double-tap the pcANYWHERE CE shortcut on the Windows CE desktop.

The pcANYWHERE CE main window consists of four drop-down menus, a series of buttons on the command bar, and an Add Remote Control Item icon.

Figure 1-3



Double-tap the icon to create a new connection item

A connection item represents a pcANYWHERE file containing connection device information and security settings used to make a connection. For more information on creating connection items, see [“Creating connection items,”](#) on page 17.

To run the pcANYWHERE CE desktop host:

- 1 Choose PROGRAMS from the Windows 95 or Windows NT Start menu.
- 2 Point to the pcANYWHERE CE folder.
- 3 Point to pcANYWHERE CE Desktop Host (see Figure 1-2).

To uninstall pcANYWHERE CE from the desktop PC:

- 1 Choose PROGRAMS from the Windows 95 or Windows NT Start menu.
- 2 Point to the pcANYWHERE CE folder.
- 3 Point to Remove pcANYWHERE CE (see Figure 1-2).

To uninstall pcANYWHERE CE from the handheld PC:

- 1 Choose SETTINGS from the Windows CE Start menu.
- 2 Double-tap Remove Programs.
- 3 Select pcANYWHERE CE from the Programs dialog box.
- 4 Tap Remove.

Note: Uninstall does not delete your connection items. If you reinstall pcANYWHERE CE at a later time it is not necessary to reconfigure your connection items.

Connection devices

2

This chapter describes the settings found in the Connection Info property page. This property page is located in the properties sheet of all connection items and determines what hardware device the connection item uses to make connections.

pcANYWHERE CE supports the following connection devices:

- TAPI modem connections
- Direct serial connections using COM1 through COM4 serial ports
- TCP/IP over Remote Networking connections



Note: Connections using TCP/IP via Remote Networking must be made using the Remote Access Service under Windows NT.

Connection Info property page

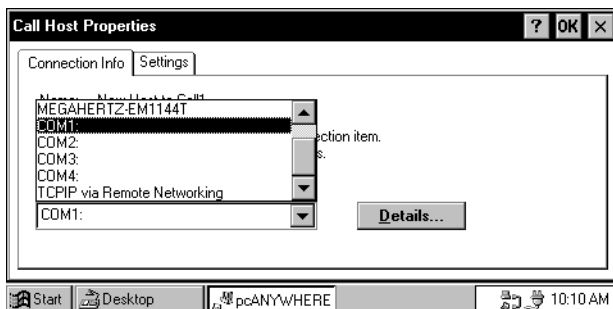
Before you can make a connection pcANYWHERE CE must know what communication device to use. Every connection item has a properties sheet associated with it that contains all the information and settings needed to make a connection.

To configure connection information:

- 1 Do one of the following:
 - Double-tap the Add Remote Control Item icon to configure a new connection item.
 - Alt+tap an existing connection item and choose PROPERTIES from the Context menu to edit the connection item.

The connection item's properties sheet appears with the Connection Info page on top.

Figure 2-1



Note: For information on the Settings property page, see “[Creating connection items](#),” on page 17.

TAPI modem definition

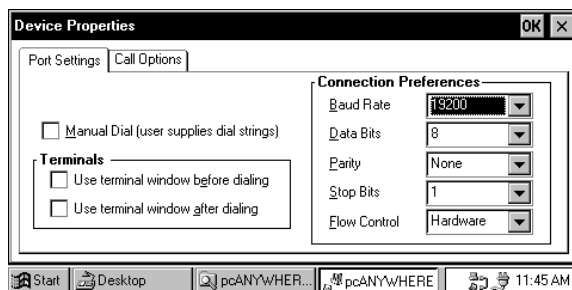
Windows CE automatically detects the modem installed on your handheld computer. pcANYWHERE CE lists this modem in the device list box on the Connection Info property page (see Figure 2-1).

To configure modem connections:

- 1 Select the modem definition listed in the device drop-down box.
- 2 Tap Details.

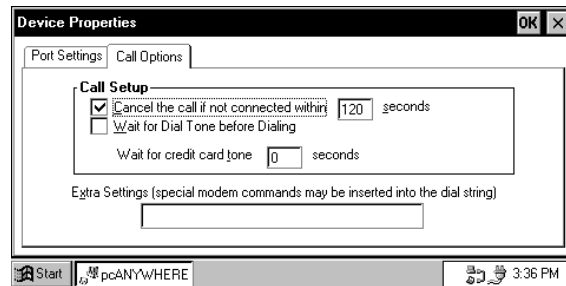
The Device Properties sheet appears with the Port Settings property page on top.

Figure 2-2



- 3 Use the default settings for pcANYWHERE CE connections. You can set the baud rate to the maximum rate specified in your modem's manual.
- 4 Tap Call Options to display the Call Options property page.

Figure 2-3



- 5 In the Call Options property page specify the call setup options:
 - **Cancel The Call If Not Connected Within:** Check to set the number of seconds pcANYWHERE waits for a host to answer before hanging up the phone.
 - **Wait For Dial Tone Before Dialing:** Check to cause pcANYWHERE to wait for the presence of a dial tone before beginning to dial the host.
 - **Wait For Credit Card Tone:** Check to set the number of seconds pcANYWHERE waits before entering a credit card number.
 - **Extra Settings:** Use this text box to enter additional modem commands. Please refer to your modem's manual for information on special dialing commands.
- 6 Tap OK to save settings and return to the Connection Info property page. Tap OK again to return to the pcANYWHERE main window.

COM1 through COM4 serial devices

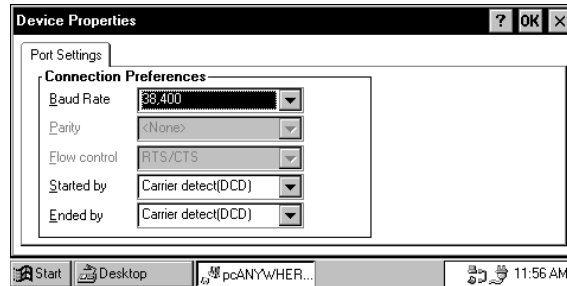
pcANYWHERE CE can make direct connections over a serial port using a null modem cable.

To configure COM1 through COM4:

- 1 Check the serial communications port your handheld PC uses for serial connections. (COM1 is the standard.)
- 2 Tap Details.

The Port Settings property page appears.

Figure 2-4



- 3 Enter the following connection preferences:
 - **Baud Rate:** Most machines can handle speeds of 38,400 and higher. The host and remote PC must use the same baud rate when making direct serial connections.
 - **Started By:** Select a method by which the communication session begins. The default is Carrier Detect.
 - **Ended By:** Select a method by which the communication session ends. The default is Carrier Detect.
- 4 Tap OK to save settings and return to the Connection Info property page. Tap OK again to return to the pcANYWHERE main window.

Remote control configuration

3

In a remote control session the remote PC controls the host PC that it is connected to. You must create a remote control connection item before making a connection for the first time.

A connection item is a file containing dialing instructions and other settings that the remote PC uses to connect to a particular host. If you make connections using different devices, you can create a separate item for each type of connection.

Creating connection items

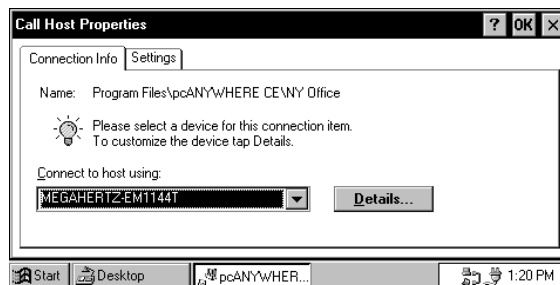
You can use the Add Remote Control Item icon to create a new connection item, or you can copy an existing item.

To create a new remote control connection item:

- 1 Do one of the following procedures:
 - Tap NEW on the File menu.
 - Double-tap the Add Remote Control Item icon.

The connection item's Properties sheet appears.

Figure 3-1



The connection item's properties sheet contains two property pages:

- **Connection Info:** Selects the hardware device this remote control connection item will use for each session.
- **Settings:** Configures optional settings to automate your connections to the selected host. The options found on the Settings property page vary depending on which connection device is selected.

To configure the connection item:

- 1 Select the device this connection item uses to make connections. For information on connection devices, see “[Connection devices](#),” on page 13.
- 2 Tap the Settings tab.

The options found on the Settings property page vary depending on which connection device is selected.

To configure settings for modem or direct connect devices:

Figure 3-2

Tap to edit the current location or use another location

- 1 Perform one of the following procedures:
 - Tap Use Dialing Properties And Phone Number to enter the area code and phone number. The dialing properties configured in the Windows CE Dialing property page are used to make the connection. Tap *Dialing Properties* to edit or change these dialing properties.
 - Tap Use Manually Entered Prefix, Area Code, Phone Number and type the complete dialing sequence in the text box. This phone number should include any prefix number such as dialing 9 for an outside line, or 1 for long distance.

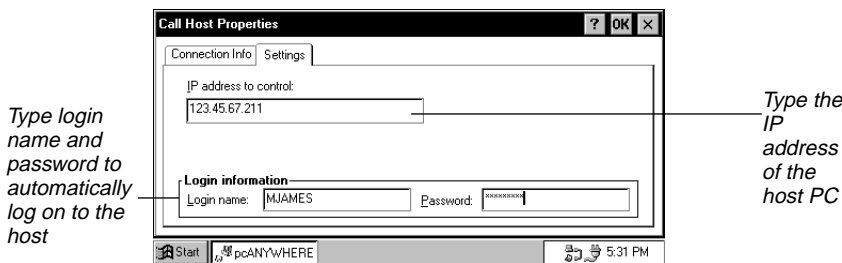
Note: If an outside line is not reached immediately after dialing 9, use one or more commas to force pcANYWHERE CE to pause before continuing to dial.

If a phone number is not provided in either of the above locations, you are prompted for one when you launch the connection item.

- 2 Type a login name and password in the appropriate text boxes to automatically log on to the host. If a login name and password are required by the host and are not entered here, you are prompted for them upon connecting to the host.
- 3 Tap OK to return to the pcANYWHERE main window.

To configure settings for TCP/IP devices:

Figure 3-3



- 1 Type the host's IP address in the IP Address To Control Text Box.
- 2 Type a login name and password in the appropriate text boxes to automatically log on to the host. If a login name and password are required by the host and are not entered here, you are prompted for them upon connecting to the host.
- 3 Tap OK to return to the pcANYWHERE main window.

Note: You must make a remote networking connection to the host server before you can connect to a pcANYWHERE TCP/IP host. Please refer to Microsoft's *Handheld PC User's Guide* for information on remote networking connections.

To rename the connection item:

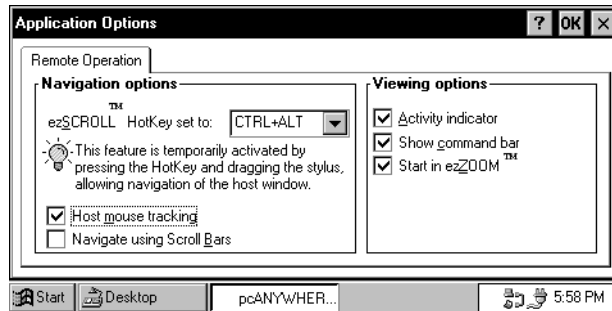
- 1 Tap the connection item once to select it.

- 2 Alt-tap the connection item and choose RENAME from the Context menu.
- 3 Type the new connection item name and press Enter.

Setting application options

Application options for pcANYWHERE CE control viewing and navigation options enabled during all remote control sessions. The scroll bar and command bar options can be temporarily changed during a session, but the changes affect only the current session and will return to the Application Options property page settings for the next connection.

Figure 3-4



Navigation Options

pcANYWHERE CE provides several options for navigating the host desktop on the smaller Windows CE device:

- **ezSCROLL™ HotKey:** Select a keystroke combination from the drop-down list box to use for navigating the remote viewing area. Press and hold this hotkey as you slide the stylus in the direction you want to view. This option is provided as an alternative to using scroll bars, which minimize the viewing area.
- **Host Mouse Tracking:** Check to view the area of the host's screen in use by the host user.
- **Navigate Using Scroll Bars:** Check to use scroll bars to navigate the remote viewing area. Scroll bars are automatically disabled when ezZOOM™ is selected.

Viewing Options

- **Activity Indicator:** Check to display a small control on the Windows CE taskbar to indicate when data is being sent or received. This option is useful when the screen is being updated beyond the currently selected viewing area.
- **Show Command Bar:** Check to display the command bar during a session.
- **Start In ezZOOM:** Check to automatically view the full host desktop on the remote when the session begins. To enlarge a portion of the screen for viewing, tap the area of the screen you want to view or drag the ezZOOM frame to the area.

Note: ezZOOM is enabled by any action that causes a screen refresh, such as logging on to the NT desktop host.

4

- Change navigation and view options
- Transfer clipboard contents from one PC to the other
- Bring special PC functions to the handheld PC

There are three command bars available to help you manage a remote session:

- *pcANYWHERE* CE command bar
- *Special keys* command bar
- *Function keys* command bar

All commands necessary to manage a remote control session are available in the pcANYWHERE CE command bar. Tap the button to enable or disable the feature.



ezZOOM: Scales the host desktop to fit in the Windows CE device display and displays a frame indicating the current view area. Use the stylus to move the frame if you want to view another portion of the host desktop.

Tip: Both screen scaling and ezZOOM scale the host desktop to fit in the Windows CE device display, making text on the screen small and perhaps difficult to read. Use screen scaling for full screen activities such as arranging windows on the host desktop. Use ezZOOM to navigate the host desktop and maximize an area for clearer viewing.



Scroll bars: Displays scroll bars on the bottom and right side of the window. This button is dimmed when screen scaling or ezZOOM are selected. Scroll bars reduce the size of the viewing area. You can use ezZOOM or ezSCROLL to easily scroll the window without reducing the viewing area.



ezSCROLL: Allows scrolling of the window in any direction. Tap the button and slide the stylus to move the window. Tap the button to cancel ezSCROLL. ezSCROLL can also be activated by pressing the hotkey configured in the Application Options property page. For more information, see “[Setting application options](#),” on page 20.



Transfer clipboard: Allows the transfer of information contained in either PC's clipboard.



Send Ctrl+Alt+Del: Sends a Ctrl+Alt+Del command to the host PC. This command is useful for logging on to a Windows NT host.



Reboot host: Allows the remote caller to cause the host to reboot and disconnect the session.

Note: If you want the host to automatically wait for a call after rebooting, the Launch Host At Startup option must be enabled on the host PC.



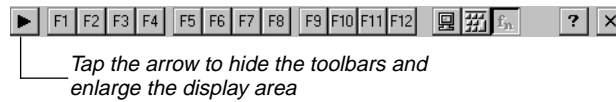
End session: Disconnects the current session.

Special keys command bar: Contains other keys essential to running a desktop PC, which are not available on the handheld PC.

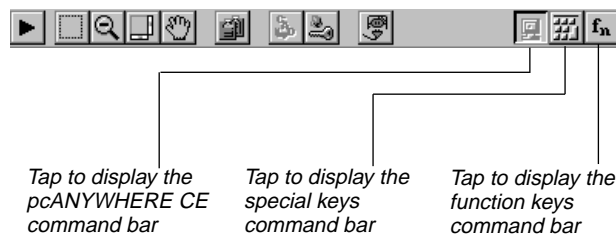
Figure 4-2



Function keys command bar: Contains the twelve standard function keys available on a desktop PC.

Figure 4-3**To switch between command bars:**

- Tap the command bar's button on the right side of the active command bar.

Figure 4-4**To hide all command bars:**

- Tap the arrow in the left hand corner of the pcANYWHERE window (See Figure 4-3).

Note: When the command bars are hidden, Alt+tap the pcANYWHERE icon on the taskbar to end the session.

Transferring data

The Windows clipboard contains information that is cut or copied from another application. You use the clipboard to copy information to or from Windows applications.

During a remote control session you can transfer text contained in the host's clipboard to the remote or the remote's clipboard to the host. Remember, copying information to the clipboard overwrites any existing information in the clipboard.

To transfer clipboard text:

- 1 Tap the transfer clipboard button in the pcANYWHERE CE command bar.

The Transfer Clipboard dialog box displays.

Figure 4-5



- 2 Tap the clipboard you want to transfer.
- 3 Tap OK to send the clipboard contents.

pcANYWHERE CE Host



The pcANYWHERE CE desktop host is provided as a companion to the pcANYWHERE CE remote. It contains the minimal features required to make a connection with the pcANYWHERE CE remote.

Note: pcANYWHERE CE is compatible with any pcANYWHERE32 host, version 7.5 or higher.

This appendix covers:

- Connection device options
- Security options
- Host operation options

Installing the pcANYWHERE CE host

The desktop host is automatically installed when you run the Setup.exe program. If an existing version of pcANYWHERE32 is found, the desktop host is not installed. pcANYWHERE32 is a complete product containing features not available in the pcANYWHERE CE desktop host.

Configuring the desktop host

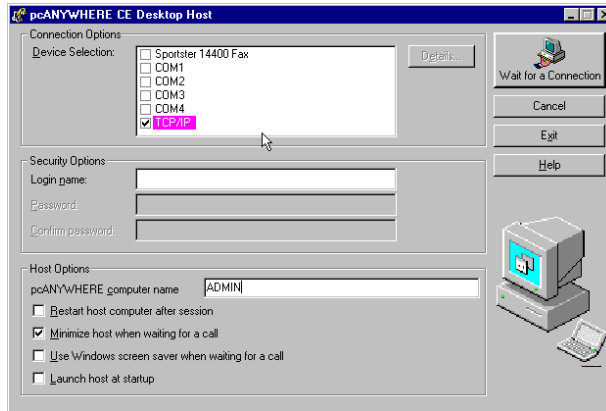
Configuration options for the desktop host are located in a single dialog box.

To run the pcANYWHERE CE desktop host:

- 1 Choose PROGRAMS from the Windows 95 or Windows NT Start menu.
- 2 Point to the pcANYWHERE CE folder.
- 3 Point to pcANYWHERE CE Desktop Host.

The pcANYWHERE CE Desktop Host dialog box appears.

Figure A-1



To configure connection options on the host:

1 Check the device used for the connection.

- **TAPI modem definition:** If your modem was connected to your PC when you installed Windows 95 or Windows NT, the operating system added a modem in the Modems folder of the Windows 95 or Windows NT control panel. pcANYWHERE CE automatically adds this modem definition to the top of the list of devices for modem connections.

If your modem has changed since the Windows 95 installation, edit or add a modem definition using the Windows 95 or Windows NT control panel.

- **COM1 through COM4 serial devices:** Modem definitions and serial ports are controlled in the Windows 95 or Windows NT control panel. The modem definition that appears in the device list also includes the correct serial port. COM1 through COM4 are for serial direct connections using a null modem cable.

Note: When making direct serial connections, both the host and remote PC must use the same baud rate. Click Details to adjust the baud rate if required.

- **TCP/IP connections:** The Windows CE remote can connect to a TCP/IP host after making a Remote Networking connection using the Remote Access Service under Windows NT.

To configure security options:

- 1 Type a login name for the remote caller to use when connecting to the host PC.
- 2 Type a password for the remote caller to use when connecting to the host PC.

Note: A login name and password are not required, but using them increases the security of the host PC.

- 3 Type a name for the host PC. The default is the name you entered when you installed Windows 95 or Windows NT.
- 4 Select any of the following options:
 - **Restart Host Computer After Session:** Determines if the host PC reboots after every session or every abnormal disconnection. If you want the host to automatically launch and wait for a call after restarting the host PC, be sure to check the Launch Host at Startup option.
 - **Minimize Host When Waiting For A Call:** Causes the host to appear on the desktop as an icon in the taskbar when it is waiting for a connection. If this option is unchecked, pcANYWHERE displays a status dialog box.
 - **Use Windows Screen Saver When Waiting For A Call:** Launches your Windows screen saver whenever the host is waiting for a call. Add a password to your screen saver to lock the host and prevent unauthorized users from canceling the waiting host.
 - **Launch Host At Startup:** Causes the host to load and wait for a call automatically each time you start your PC.
- 5 Do one of the following procedures:
 - Click Wait For A Connection to wait for a call.
 - Click Exit to save your settings and exit the desktop host.

Index

A

- Add Remote Control Item icon, 10
 - copying connection item, 17–18
 - creating connection item, 17–18
- application options, setting, 20
- Applications Options property page, 20

B

- baud rate, setting, 16

C

- Call Options property page, 15
- call setup options, specifying, 15
- clipboard contents, transferring, 25–26
- command bars, 23
 - hiding, 25
- pcANYWHERE CE, 23
- switching between, 25
- configuring
 - Connection Info property page, 13
 - connection information, 13
 - connection item property sheet, 13
 - connection items, 18, 18–19
 - modem connections, 14–15
 - Port Settings property page, 15–16
 - remote control session, 17–21
 - serial connections, 15–16
 - settings
 - direct connect devices, 18–20
 - modems, 18–20
 - Settings property page
 - TCP/IP devices, 18–20
 - TCP/IP devices, 19
- configuring connections
 - Connection Info property page, 18
- configuring settings, 17–19
- connection devices, 13–16

- Connection Info property page
 - configuring connections, 18
 - connection settings, 13
 - device list, 14
- connection information, configuring, 13
- connection item
 - See also* connection devices
 - copying, 17–18
 - creating, 10, 18
 - definition of, 10, 17
 - editing, 13
 - renaming, 19
- configuring
 - connection items
 - See also* Settings property page
- connection preferences, serial, 16
- connection settings
 - Connection Info property page, 13
- Context menu, 13
- copying connection item, 17–18
- copying program files to handheld PC, 9
- copying program files to program folder, 8
- creating connection item, 17–18
- Ctrl+Alt+Del command, 24

D

- desktop host files location, 8
- desktop host, installing, 8
- Desktop Program Location, 8
- Device Properties sheet, 14
- dialing properties, setting, 18
- dialing sequence, entering manually, 18–19
- direct connect devices
 - configuring settings, 18–19
- direct connection with serial devices, 15–16
- disconnect remote session, 24

E

- editing connection item, 13
- enabling ezZOOM, 21
- entering host IP address, 19
- ezSCROLL command, 24
- ezSCROLL HotKey, 20
- ezZOOM command, 23
- ezZOOM, enabling, 21

F

- function keys command bar, 23

H

- handheld PC
 - copying pcANYWHERE CE to, 9
 - transferring clipboard contents from, 25–26
- handheld PC files, location of, 8
- Handheld PC Setup Location, 8
- host IP address, entering, 19
- host mouse tracking, 20
- HPC Explorer, 9

I

- installation
 - automatic, 7
 - manual, 7–8
- installing desktop host, 8

L

- Launch Host At Startup option, 24
- licensing, 8
- logging on to the host, 19
- logging on to Windows NT host, 24

M

- modem connections
 - configuring, 14–15
 - configuring connection settings, 18–19
 - default settings, 15

- modem connections (*continued*)
 - saving settings, 15
- modem definition, selecting, 14
- modems
 - configuring connection settings, 18–19

N

- navigating remote viewing area
 - ezSCROLL HotKey, 20
 - host mouse tracking, 20
 - scroll bars, 20
- Navigation Options, setting, 20

P

- pcANYWHERE CE
 - command bar, 23–25
 - copying to handheld PC, 9
 - function keys command bar, 24
 - installing, 7–8
 - licensing, 8
 - main window, 10
 - registering, 9
 - remote session program functions, 23
 - special keys command bar, 24
 - uninstalling from desktop PC, 11
 - uninstalling from handheld PC, 11
- pcANYWHERE CE command bar, 23
 - ezSCROLL, 24
 - ezZOOM, 23
 - reboot host, 24
 - screen scaling, 23
 - Send Ctrl+Alt+Del, 24
 - transfer clipboard contents, 24
- pcANYWHERE CE desktop host, 27–29
 - configuring, 27–29
 - installing, 27
- pcANYWHERE CE desktop host, running, 11
- Port Settings property page, 14, 16
- program files, 8
- program folder
 - copying program files to, 8
 - specifying, 8

program location
 changing, 8
 selecting, 9
 PROPERTIES, 13

R

reboot host command, 24
 registering pcANYWHERE CE
 by fax or mail, 9
 by modem, 9
 remote control configuration, 17–21
 remote control sessions, 23–26
 remote PC
 setting baud rate for serial connection, 16
 transferring clipboard contents to, 25–26
 remote session program functions, 23
 RENAME, 19
 renaming connection item, 19

S

saving modem connection settings, 15
 screen scaling command, 23
 scroll bars, 20, 24
 send Ctrl+Alt+Del command, 24
 serial connection, configuring COM1 through
 COM4 for, 15–16
 serial device connection preferences, 16
 serial devices
 making direct connection, 15–16
 setting application options, 20
 Navigation Options, 20
 Viewing Options, 21
 setting dialing properties, 18
 Settings property page, 18
 Setup, using to copy program files, 9
 special keys command bar, 23
 specifying call setup options, 15

T

TAPI modem
 automatic detection of, 14
 definition, 14
 TCP/IP devices
 configuring connection settings, 18–20
 configuring settings, 19–20
 making remote network connection to
 host server, 19
 remote network connection to host server,
 17–19
 TCTP/IP devices
 Windows NT Remote Access Service, 13
 transfer clipboard command, 24

U

uninstalling pcANYWHERE CE
 from desktop PC, 11
 from handheld PC, 11

V

viewing host desktop
 See also Viewing Options
 automatically at session start, 21
 enlarging portion of screen for, 21
 Viewing Options, setting, 21